



VITAL LEARNING™ SOLVING WORKPLACE PROBLEMS™



Workplace problems arise from a deviation of the expected outcome: results are wrong, procedures are faulty or some other aspect of the project is unsuccessful. The difficulty encountered in solving problems occurs when the root cause is improperly defined or identified. In the rush to complete a project, people often take action on the first solution that appears when multiple solutions are possible. Determining the best solution requires a proven problem-solving process.

CHOOSING THE BEST SOLUTIONS BRINGS SUCCESS

Solving problems in the workplace not only addresses issues and problems as they arise but also involves looking at the way things are currently done to find better methods and procedures.

The Vital Learning Solving Workplace Problems™ program provides supervisors, team leaders and managers with an effective approach and the tools necessary for improving current processes that organizations use to solve problems. Using structured activities, participants learn to identify the problem, uncover the cause, select the best solution, implement the solution, and determine what feedback and follow-up is necessary.

Solving Workplace Problems teaches leaders the following skills:

- Follow a step-by-step problem-solving process*
- Devise a problem statement that clearly defines the problem*
- Assess the context of the problem*
- Involve team members in the evaluation of root causes and a possible solution*
- Create an implementation plan*
- Obtain agreement and support for implementation*

Throughout the seminar, managers review case studies, participate in group discussions, practice new skills, and receive immediate feedback. The program provides them with implementation tools, a troubleshooting guide and additional resources to help them apply the skills they have learned on the job.





ESSENTIAL COURSE MATERIALS

Solving Workplace Problems is available in classroom, online and blended formats to accommodate any organization or type of business. Each seminar includes the following course materials:

Facilitator Guide

- Provides complete instructions about how to conduct the seminar
- Supplies explanatory information for the trainer, sample trainer narrative, transcripts of video segments and facilitation notes
- Includes the facilitator resource CD-ROM, which contains a PowerPoint presentation, additional resources, reproducible pages from the facilitator guide and a participant workbook

Participant Workbook

- Provides exercises, forms, skill practice aids and a video synopsis
- Offers a job aids section with tools and resources for applying seminar skills
- Includes a Memory Jogger Card™, which gives leaders a handy reminder of the seminar's skill points

ABOUT VITAL LEARNING

Vital Learning's training seminars teach managers, supervisors and team leaders in any industry to use basic human relations skills to motivate and lead their employees with finesse and respect. By improving team leader–team member relations, organizations can improve productivity, enhance employee motivation and retention, and develop employee work habits and potential. Vital Learning's seminars are available as classroom sessions, online sessions, or a combination of classroom and online sessions.

Based in Omaha, Neb., Vital Learning provides seminars based on McGraw-Hill Training Systems, which Vital Learning acquired in 1989. Throughout the past two decades, Vital Learning has worked with industry experts to enhance and develop its training seminars, bringing an industry-leading product to the marketplace. Let us show you what our products can do for your organization.

Solving Workplace Problems and Memory Jogger Card are trademarks of Vital Learning.

BENEFITS OF SOLVING WORKPLACE PROBLEMS™

This seminar is available in classroom format.

Program is designed for six to 18 participants to complete in four hours.

Seminar participants receive hands-on experience practicing the program's skills and methods.

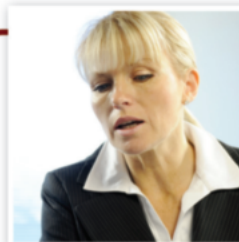
Participants learn to identify the problem by writing problem statements, identifying the magnitude of the problem and deciding how to proceed.

Participants learn to identify the cause of the problem and its symptoms.

Participants learn to select the best solution by generating alternatives and weighing them against the criteria.

Participants learn to implement the solution by evaluating resources, assigning tasks and establishing completion dates.

Participants learn to provide follow-up and feedback by identifying criteria to measure progress and any follow-up needed.



FOR PURCHASING INFORMATION

Assessment Leaders LLC.

866.864.8200

sales@assessmentleaders.com

www.assessmentleaders.com



assessmentLEADERS

DISCOVER THE HUMAN POTENTIAL™